



**HANWA ENGINEERING CO., LTD.**

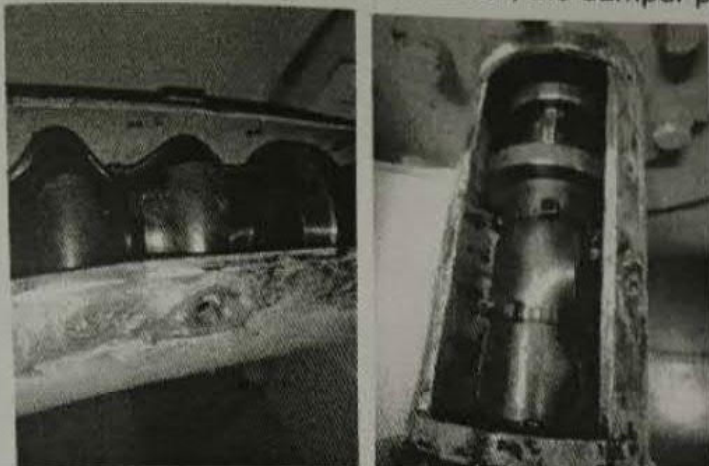
9F, URBAN RESEARCH BLDG. 1-6-4, KYOMACHIBORI  
NISHI-KU, OSAKA, JAPAN

TEL: 816-6444-7830 FAX: 816-6444-7831

E-MAIL: [operation@hanwaeng.co.jp](mailto:operation@hanwaeng.co.jp)

## voucher

8 Checking coupling of the encoder, the damper plate already broken, renew rubber.



9 Pick-ups and it's TDC check.



10 Checking the injection angle by trigger.



11 pressure, Sensor, heater, inspection, all normally

12 Motor running test .

13 load indicator checking Mcu Software 2.51

